

CUSTOM CUT PARTS



Beltservice Corporation

Custom Cut Parts

Experience, innovation and technical leadership have come together at Beltservice Corporation to create its newest product capability: CUSTOM CUT PARTS. Precise shapes are cut from any specification in Beltservice's inventory of over 300 different belting styles. Virtually any shape can be cut in a single step with an edge quality that usually requires no secondary finishing. The CNC controlled waterjet and flash cutting capabilities keeps Beltservice on the "cutting edge" of precision made custom cut parts.

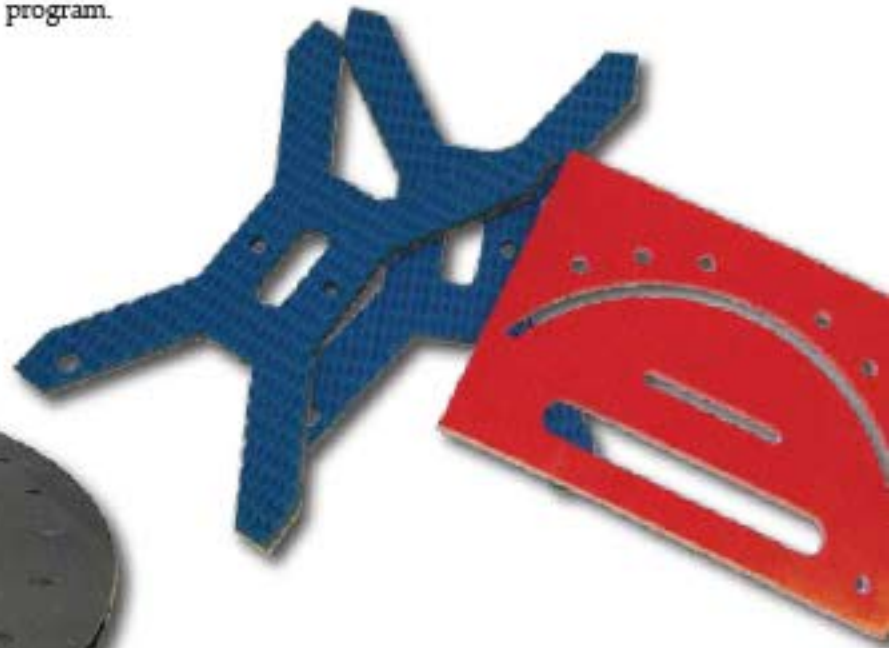
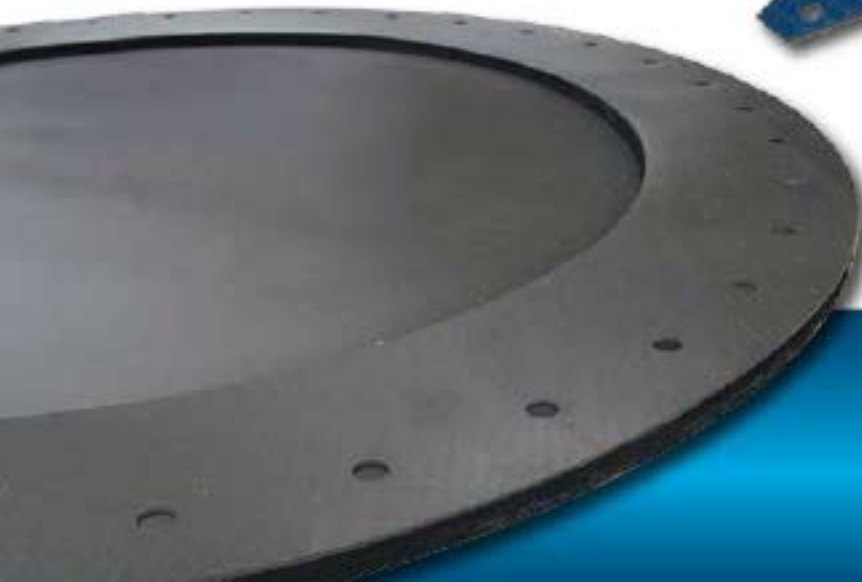
BELTSERVICE'S CUT PARTS ADVANTAGES

- Improved water cutting technology and capability.
- Flash cutting high volume technology.
- Computer controlled cutting capability requiring no upfront tooling costs.
- Parts can be made from any of the 300+ belt specifications in our inventory.
- Parts are also available cut out of many non-stock materials or customer supplied materials.
- When modifications to a part are required a program change at no cost is normally all that is needed.
- A bill of material and cutting program is created for every part order guaranteeing the exact duplication of parts for repeat orders.
- Prototypes for new equipment designs can be ordered with no up front tooling cost.

Beltservice's Custom Cutting Capabilities

Designed For Precision And Versatility

- In house flash cutting and waterjet systems provide the flexibility to choose the fastest and most economical method of producing custom cut parts.
- A wide range of materials and dimensions can be cut using software controlled precision technology when tolerances are critical.
- Exceptional edge quality is produced without inducing heat affected zones or mechanical stress. Raw materials maintain their structural integrity, and secondary finishing is usually not required.
- Cutting system uses Windows™ based PC software for drawing the parts. DXF(CAD) or IGES files can be downloaded, or a drawing can be scanned directly into the system to create the cutting program.



Waterjet Cutting

Beltservice's flexible and accurate multi head waterjet system cuts with a stream of ultra high pressure water, rather than shearing or heat, producing exceptional edge quality. With a multi-head system and a large 12' x 72" wide cutting table, parts can be made quickly and economically reducing cost and lead time. Depending on material, precision parts have been made up to 4" thick. Parts can be made from rubber, silicone, PVC, urethane, foam rubber, plexi-glass, vinyl, leather, polypropylene and UHMW to name just a few of the many materials the waterjet is capable of cutting. Cut parts can also be produced from customer supplied materials (testing may be required on customer's material).



Cut Parts Products Made By Beltservice

CNC/Computer controlled Flash Cutting technology further enhances Beltservice's ability to provide our customers with custom cut parts made to their specific requirements with respect to size, dimension, temperature, pressure and material. Flash cutting technology uses small ultra high speed blades which can cut large quantities in very little time. Material up to 3/4" thick can be cut on the large 20' x 96" wide vacuum table minimizing the amount of time required for material handling and creating a high degree of production efficiency.



Our environmentally friendly in house flash cutting and multi-head waterjet technologies coupled with the largest inventory and widest variety of products in the belting industry makes Beltservice your one-stop source for offering your customers rapidly produced, precision cut parts and gaskets for an unlimited variety of applications.

Beltservice's Perforations (Waterjet, Drill or Punch)

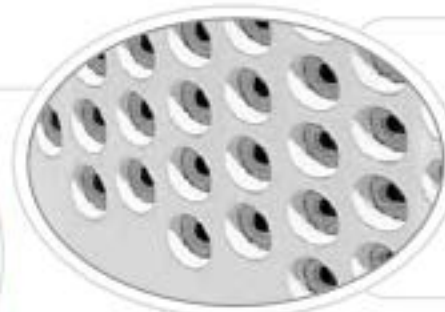
Our experience in creating intricate stepped perforation patterns in conveyor belts fits well with the precision needed to produce custom cut parts. For over 30 years, Beltservice's die cutting and hole punching expertise has accounted for much of its superiority in belting fabrications, either as a step in a process, or as an end in itself. Perforated belts and some of their applications include the following:

- **Vacuum Applications** which call for clean, clear holes allowing proper suction.
- **Sizing Belts** commonly found in sorting operations promoting accurate separation.
- **Bolt Holes** precisely located assuring tight fit and easy installation.
- **Cutouts of unique configurations.** If it can be drawn, it can be cut.
- **Drainage Systems** where holes must be correctly spaced in order for fluids to properly draw.
- **Screening applications**



Above: Two examples of the wide variety of perforating dies available at Beltservice Corporation.

Left: Belt with Counter Bore Pattern.



Left: Example of a thermoplastic belt perforated using waterjet technology.

Parts

- Blocks
- Gaskets
- Curtains
- Bumpers
- Washers
- Pads
- Straps
- Cushions
- Cones
- Mud Flaps
- Food Grade Gaskets & Parts
- Chutes
- Liners
- Blades
- Covers
- Wear Bars
- Logos

Industries

- Mining
- Cement
- Energy
- Lawn Care
- OEM's
- Marine
- Recycling
- Automotive
- Construction
- Foundry
- Agricultural
- Food
- Manufacturing

ST. LOUIS HEADQUARTERS

4143 Rider Trail North, Earth City, MO 63045
Ph: (314) 344-8500 • Toll Free: (800) 727-2358 • Fax: (314) 344-8511
www.beltservice.com • sales@beltservice.com

PHILADELPHIA BRANCH

Toll Free: (800) 777-1314

CHARLOTTE BRANCH

Toll Free: (800) 849-2358

BOISE BRANCH

Toll Free: (800) 423-4469

SACRAMENTO BRANCH

Toll Free: (800) 289-2358

PORTLAND BRANCH

Toll Free: (800) 347-9251

LOS ANGELES BRANCH

Toll Free: (800) 289-2358

BELTSERVICE CANADA CO.

Toll Free: (877) 210-7423

BELTSERVICE de MEXICO

Toll Free: (5255) 5362-0434

All sales are subject to Beltservice's standard terms of sale contained in its invoices, copies of which will be provided upon request. Your order will be deemed an acceptance of those terms.